

Anti-CALCRL RAMP1 hIgG2 Antibody(Erenumab)

Product information

GM-51996AB-10	10 µg
GM-51996AB-100	100 µg
GM-51996AB-1000	1 mg

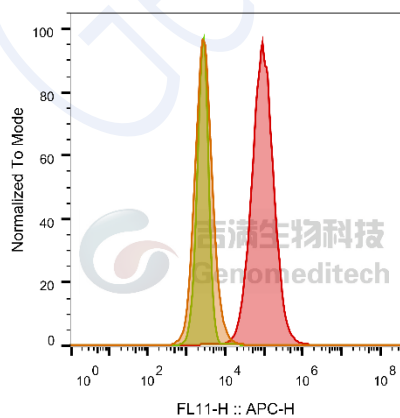
Antibody Information

Species Reactivity	Human;
Clone	Erenumab
Source/Isotype	Monoclonal human IgG2, λ
Application	Flow cytometry;
Other Names	CGRPR, CRLR, LMPHM8
Gene ID	Q16602 (human_CALCRL); O60894-1(human_RAMP1)
Storage	Store at 2-8°C short term (1-2 weeks).Store at ≤ -20°C long term. Avoid repeated freeze-thaw.
Formulation	Phosphate-buffered solution, pH 7.2.
Endotoxin	< 1 EU/mg, determined by LAL gel clotting assay

Data Examples

Flow cytometry

H_CALCRL RAMP1 CHO-K1 Cell Line (Catalog # GM-C26514) was stained with Anti-CALCRL RAMP1 hIgG2 Antibody(Erenumab) or isotype control antibody.



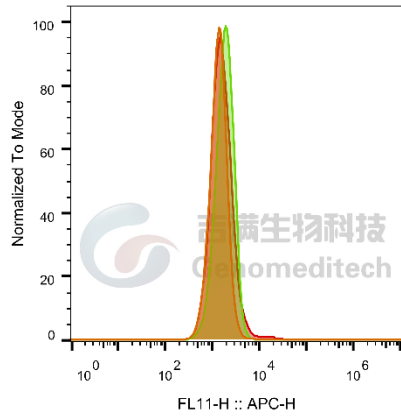
SampleID	Geometric Mean : FL11-H
CHO-K1 anti-CALCRL RAMP1+APC-2nd Ab	2853
CHO-K1 H_CALCRL RAMP1 H_IgG+APC-2nd Ab	2881
CHO-K1 H_CALCRL RAMP1 anti-CALCRL RAMP1+APC-2nd Ab	91060

Fig. FACS

Version:0.3.2.240521

Flow cytometry

H_CALCRL RAMP2(AM1) CHO-K1 Cell Line (Catalog # GM-C26536) was stained with Anti-CALCRL RAMP1 hlgG2 Antibody(Erenumab) or isotype control antibody.

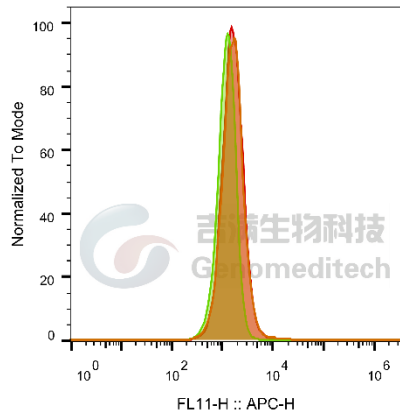


SampleID	Geometric Mean : FL11-H
CHO-K1 anti-CALCRL RAMP1+APC-2nd Ab	1381
CHO-K1 H_CALCRL RAMP2 HlgG+APC-2nd Ab	1855
CHO-K1 H_CALCRL RAMP2 anti-CALCRL RAMP1+APC-2nd Ab	1610

Fig. FACS

Flow cytometry

H_CALCRL RAMP3(AM2) CHO-K1 Cell Line (Catalog # GM-C26537) was stained with Anti-CALCRL RAMP1 hlgG2 Antibody(Erenumab) or isotype control antibody.



SampleID	Geometric Mean : FL11-H
CHO-K1 anti-CALCRL RAMP1+APC-2nd Ab	1641
CHO-K1 H_CALCRL RAMP3 H_lgG+APC-2nd Ab	1224
CHO-K1 H_CALCRL RAMP3 anti-CALCRL RAMP1+APC-2nd Ab	1618

Fig. FACS